

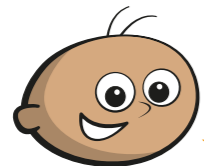
# Months and years

**1** Use a calendar to help you answer the questions.

**a)** How many days are in each month in a normal calendar year?

January	<input type="text"/>	May	<input type="text"/>	September	<input type="text"/>
February	<input type="text"/>	June	<input type="text"/>	October	<input type="text"/>
March	<input type="text"/>	July	<input type="text"/>	November	<input type="text"/>
April	<input type="text"/>	August	<input type="text"/>	December	<input type="text"/>

**b)**



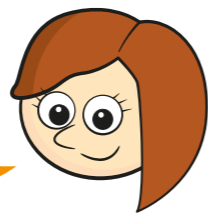
There are more days in a leap year, so all of the answers to part a) will change.

Do you agree with Tommy? \_\_\_\_\_

Explain your answer.

**2** 2020 is a leap year.

There are 365 days in the year 2020



**a)** Do you agree with Rosie? \_\_\_\_\_

Talk about it with a partner.

**b)** When will the next three leap years be?

<input type="text"/>	<input type="text"/>	<input type="text"/>
----------------------	----------------------	----------------------

**3** Here is a calendar from December 2016

Monday	Tuesday	Wednesday	Thursday	Friday	Saturday	Sunday
			1	2	3	4
5	6	7	8	9	10	11
12	13	14	15	16	17	18
19	20	21	22	23	24	25
26	27	28	29	30	31	

**a)** What day of the week was 25 December in 2016?

\_\_\_\_\_

**b)** Jack's birthday is on 17 December.

What day of the week was his birthday in 2016?

\_\_\_\_\_

**c)** How many days are there between Jack's birthday and Boxing Day?

\_\_\_\_\_

**d)** What day of the week was New Year's Day in 2017?

\_\_\_\_\_

**e)** What was the date on the last Thursday of November 2016?

\_\_\_\_\_

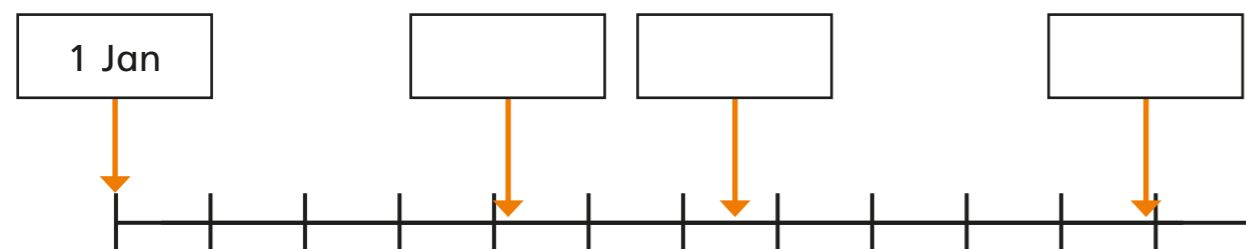
4 Write  $<$ ,  $>$  or  $=$  to complete the statements.

- a) 1 week  8 days
- b) 8 days  2 weeks
- c) 3 weeks  1 month
- d) 5 weeks  1 month
- e) 12 months  1 year
- f) 2 years  22 months
- g) 36 months  3 years

5 The number line represents one year.

a) Complete the boxes with an estimate of the date.

The first one has been done for you.



b) Estimate where these dates belong and label them on the number line.

2 April                      20 September                      28 February

Compare answers with a partner.

6 Jack, Eva, Whitney and Ron were all born in the same year.

Match the birthday to the child.

Jack	Eva	Ron	Whitney
2 November	31 January	15 June	4 May

7 Huan, Dani and Filip are counting up in different numbers of days.

Huan starts on 1 July and counts in 2s.

Dani starts on 31 May and counts in 5s.

Filip starts on 30 May and counts in 3s.

Who will reach August first? \_\_\_\_\_

May							June							July							August		
1	2	3	4	5	6	7	1	2	3	4	5	6	7	1	2	3	4	5	6	7	1	2	3
8	9	10	11	12	13	14	8	9	10	11	12	13	14	8	9	10	11	12	13	14			
15	16	17	18	19	20	21	15	16	17	18	19	20	21	15	16	17	18	19	20	21			
22	23	24	25	26	27	28	22	23	24	25	26	27	28	22	23	24	25	26	27	28			
29	30	31					29	30						29	30	31							

