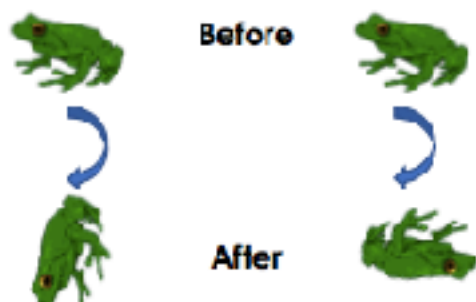


Describing Turns

4a. Two frogs start in the same position. They want to turn the same amount in the same direction.



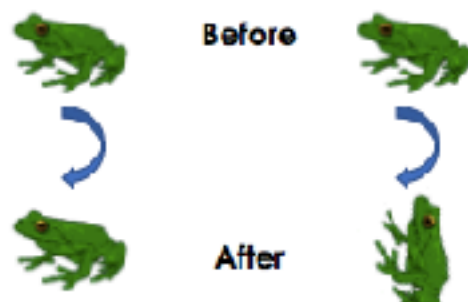
What mistake have they made? Explain.



P

Describing Turns

4b. Two frogs start in the same position. They want to turn the same amount in the same direction.



What mistake have they made? Explain.



P

5a. A triangle has been turned.



Josh says,



The shape has made a whole turn anti-clockwise.

Is Josh correct? Explain why.



P

5b. A triangle has been turned.



Asha says,



The shape has made a three-quarter turn anti-clockwise.

Is Asha correct? Explain why.



P

6a. How many different ways could Shape A have turned to get to the position of Shape B?

Shape A

Shape B



P3

6b. How many different ways could Shape A have turned to get to the position of Shape B?

Shape A

Shape B



P3

Answers

Expected

4a. The first frog has made a three quarter turn clockwise and the second has made a half turn clockwise.

5a. Josh is not correct because the shape has made a half turn anti-clockwise.

6a. 2 ways: a three quarter turn clockwise or a quarter turn anti-clockwise.

Expected

4b. The first frog has made a whole turn clockwise and the second has made a quarter turn clockwise.

5b. Asha is not correct because the shape has made a three quarter turn clockwise.

6b. 2 ways: a quarter turn clockwise or a three quarter turn anti-clockwise.