

# Year One Topic Home Learning

This week we are going to think about ladybirds.

There's a short CBeebies clip about ladybirds found at: <https://www.youtube.com/watch?v=nl7KqpqoN9o> and a good fact page at: <https://www.natgeokids.com/nz/discover/animals/insects/ladybird-facts/>

Here are our favourite facts:

- ★ Did you know that ladybirds are actually beetles?
- ★ Farmers love ladybirds because they eat aphids (from the story) and other plant-eating pests. A single seven-spot ladybird can gobble more than 5000 aphids!
- ★ There are 5000 different ladybirds around the world. They are found in most countries except the really cold ones!

For your home learning challenge this week, we would like you to try and spot some ladybirds. Turn over leaves, roll back stones and peer inside window frames in the hunt for ladybirds.

Next is a spotter sheet to help you find some common ladybirds.



*Pine Ladybird*

**Notes**



*Orange Ladybird*

**Notes**



*Harlequin Ladybird*

**Notes**



*14-spot Ladybird*

**Notes**



*2-spot Ladybird*

**Notes**



*Eyed Ladybird*

**Notes**



*7-spot Ladybird*

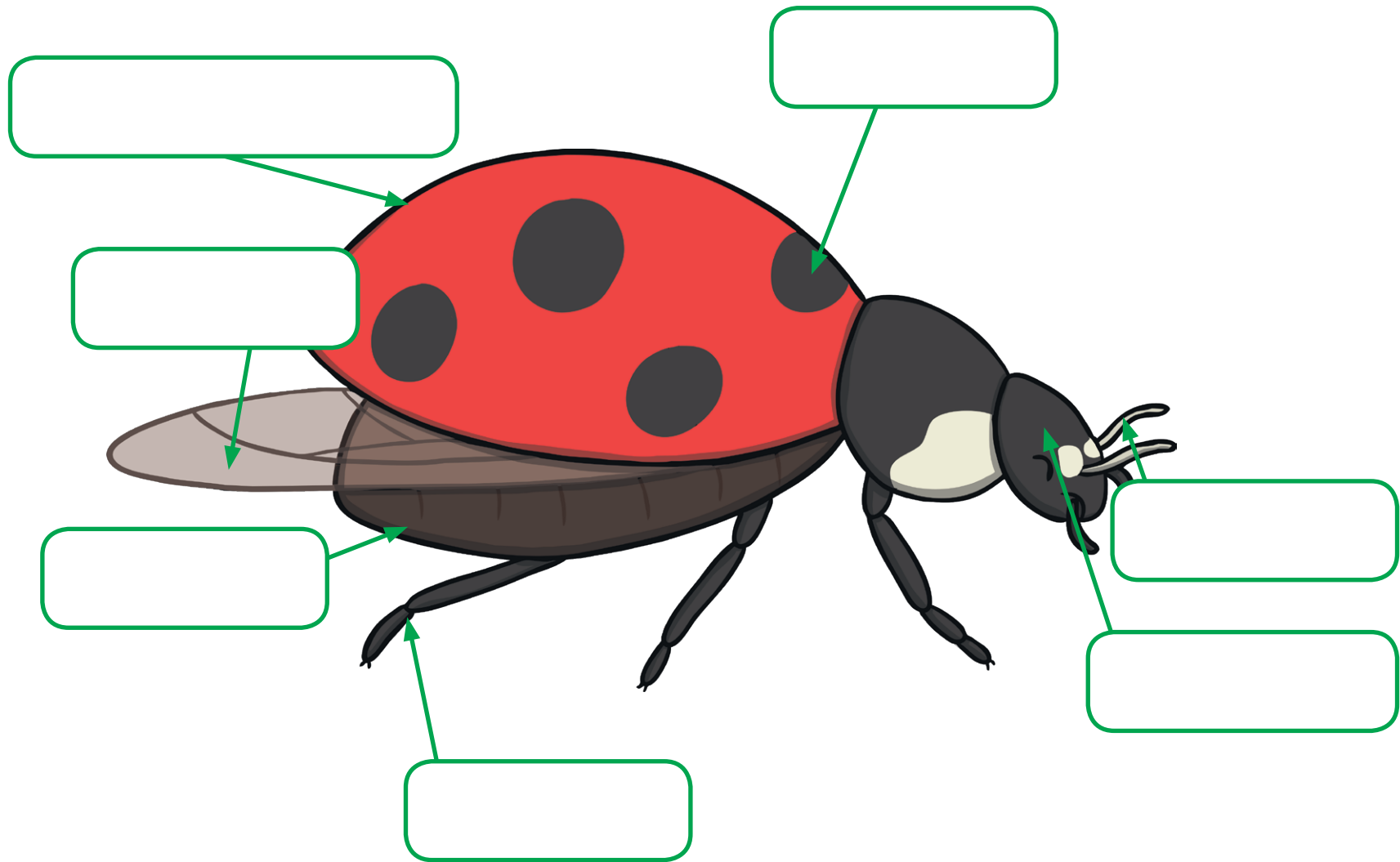
**Notes**

## Other Topic Ideas:

- \* You could label the key parts of a ladybird using the worksheet below. If you can't print, you could draw and label your own ladybird.
- \* Try to complete the ladybird life cycle (see below).
- \* Try and complete the ladybird word search (see below).
- \* You could find and paint your own ladybird rocks for your garden.



# Parts of a Ladybird Labelling



head

antennae

legs

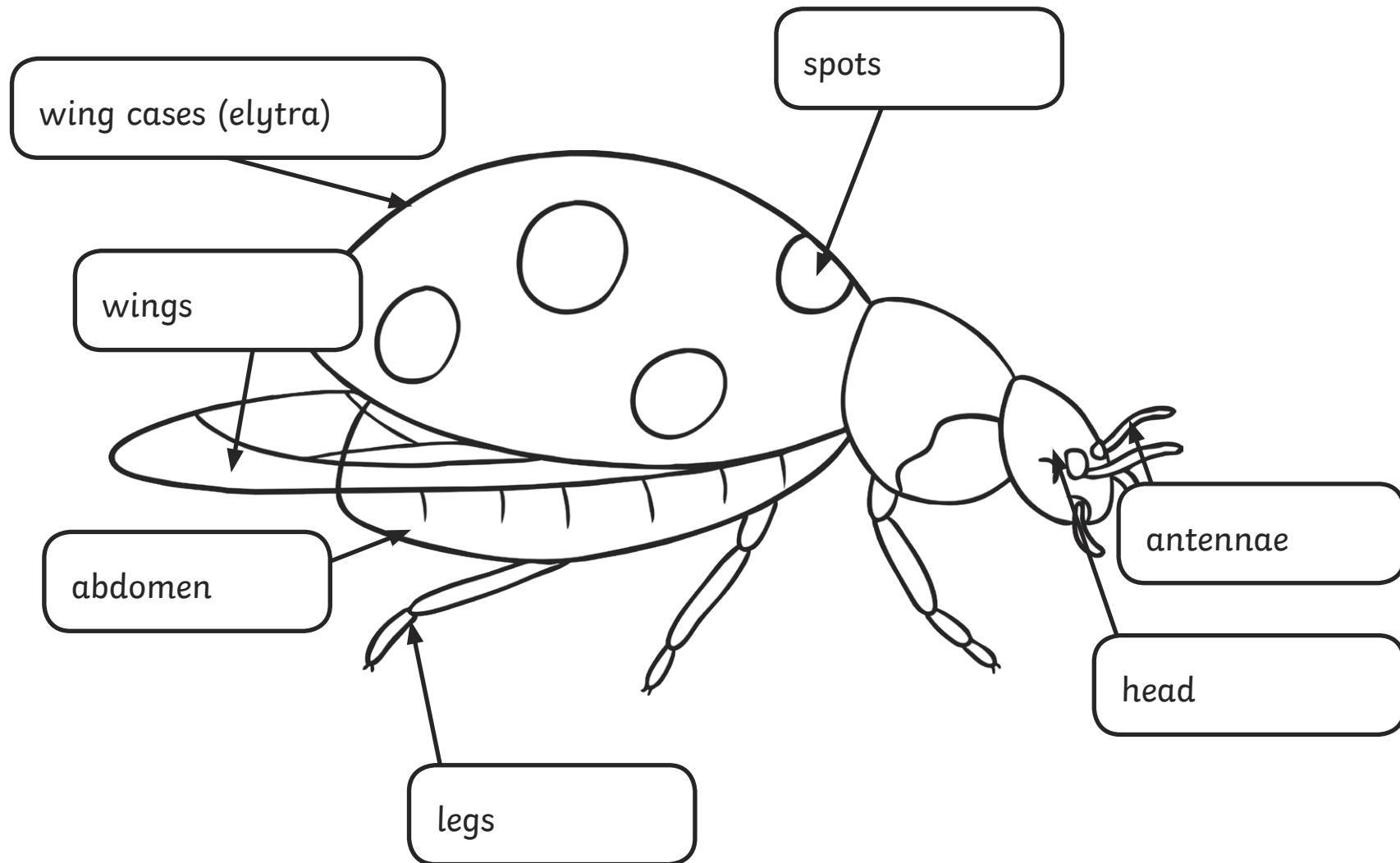
wingcases (elytra)

wings

spots

abdomen

# Parts of a Ladybird Labelling Answers



# The Bad-Tempered Ladybird

a l a d y b i r d m  
n m i r r o r q w e  
c r g o r i l l a l  
f i r e f l i e s e  
s s w v t w r s w p  
k s p a r r o w a h  
u u s w h e n e s a  
n a r o s e c i p n  
k j z w l e a f z t  
w i g c h f x h m b

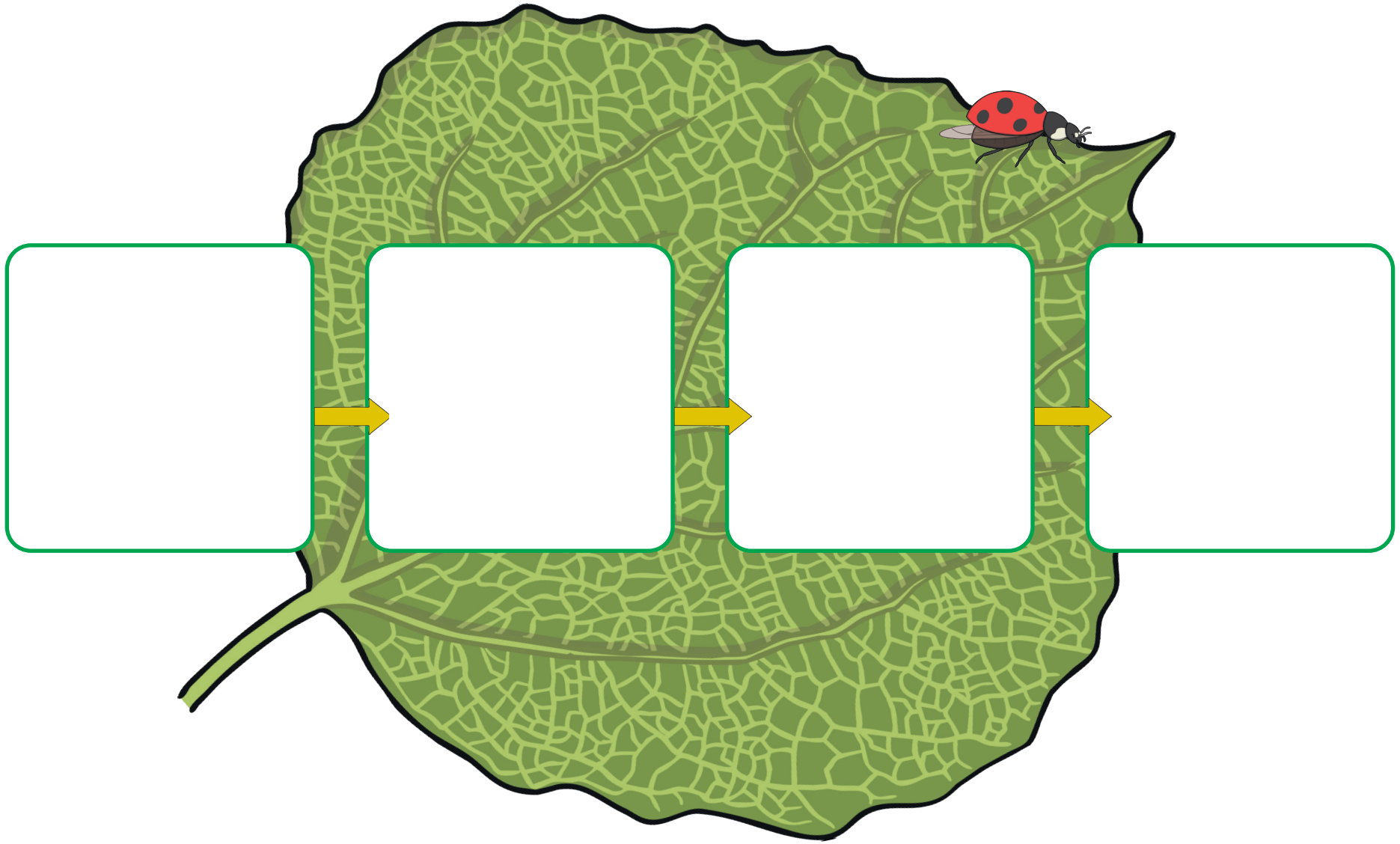
ladybird  
wasp  
skunk  
sparrow

elephant  
leaf  
gorilla  
fireflies



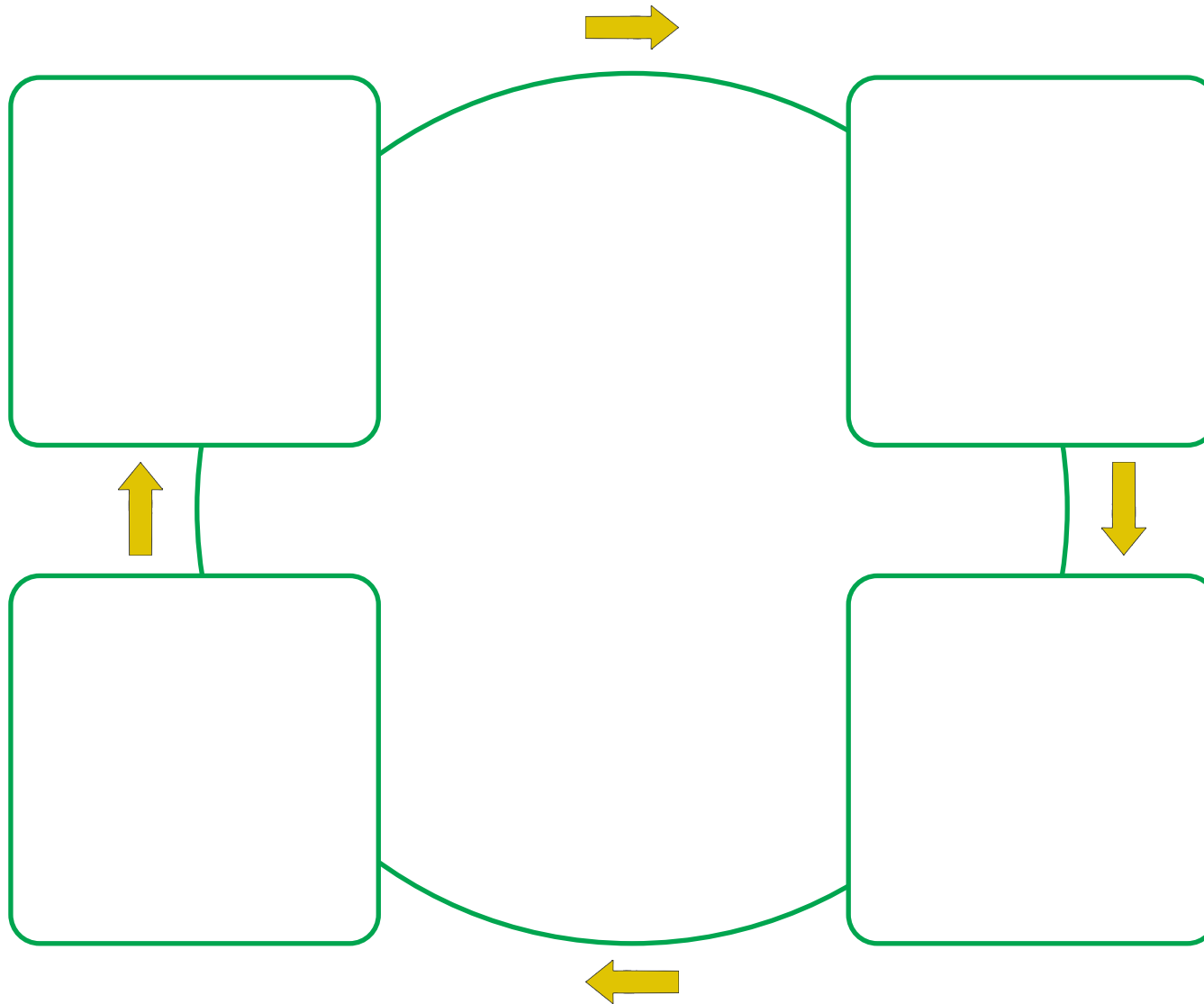
# Ladybird Life Cycle

Can you put the pictures in the right order?



# Ladybird Life Cycle

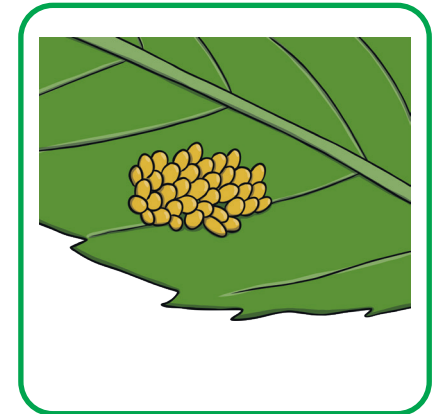
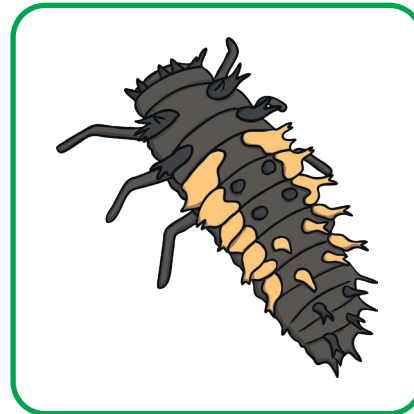
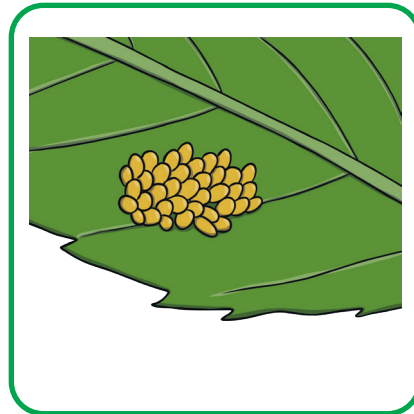
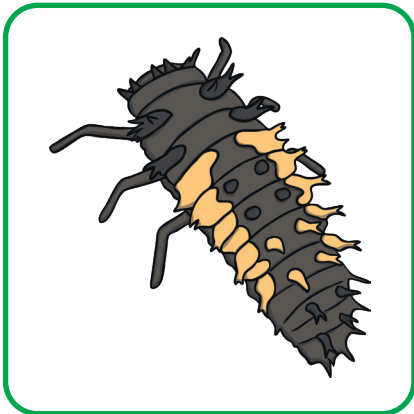
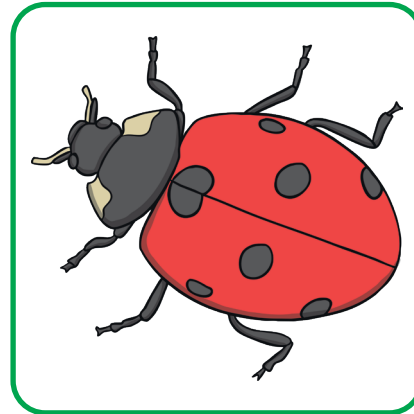
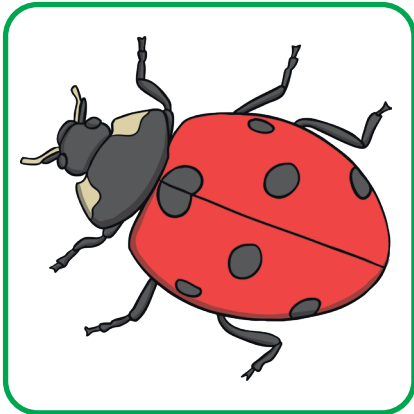
Can you put the pictures in the right order?





# Ladybird Life Cycle

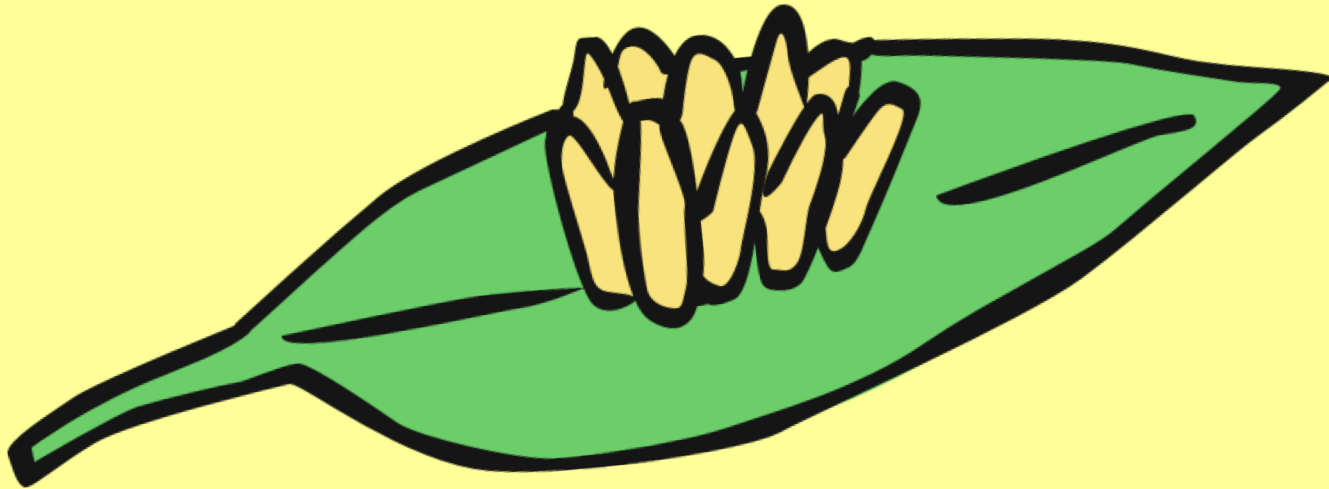
Cut out these images to use with the worksheets.



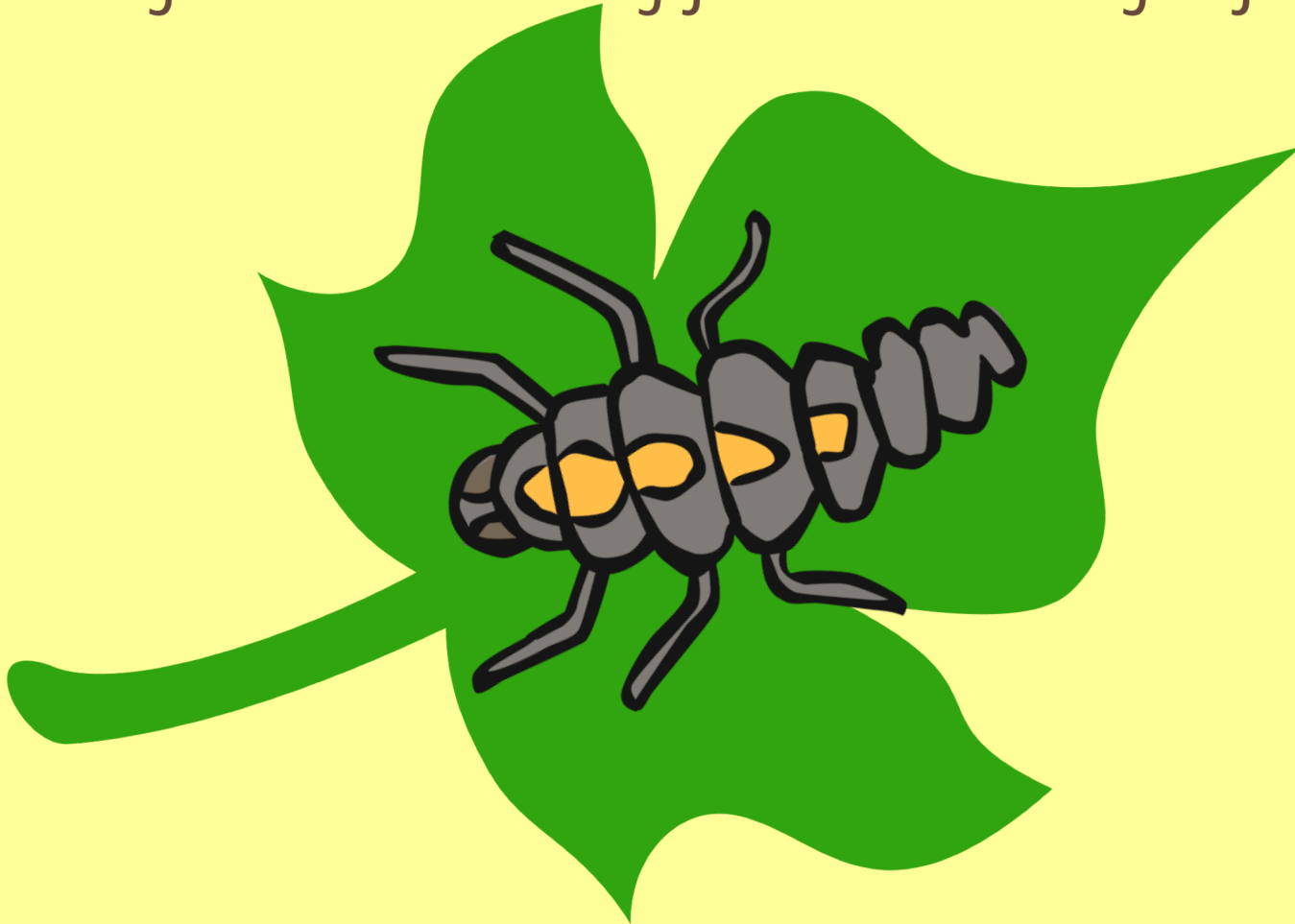
# Ladybird Life Cycle



The female Ladybird lays its eggs on to a leaf.



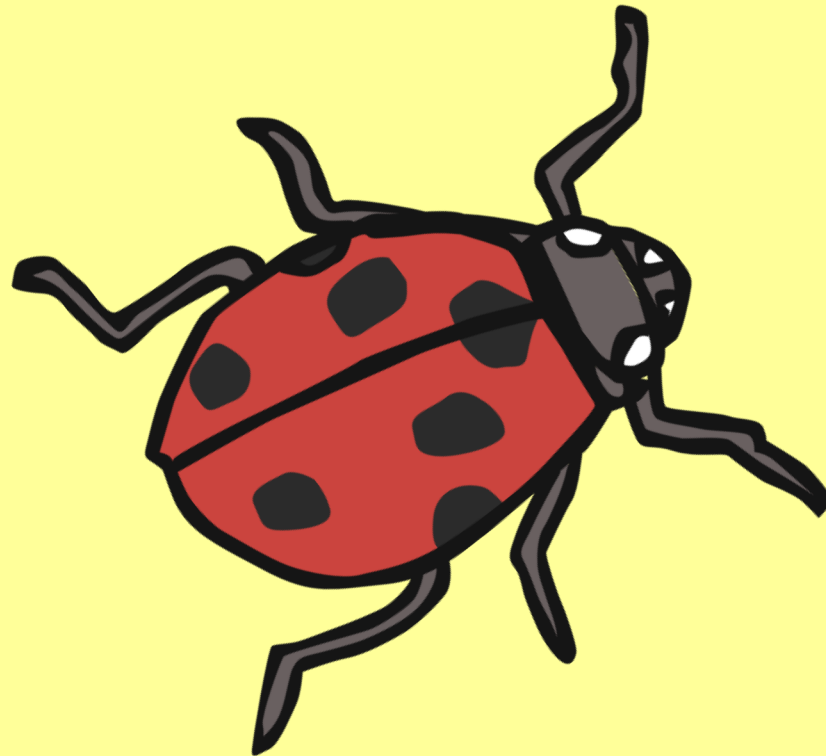
The eggs hatch and the larvae are born.  
They will spend their time feeding on aphids  
to grow and be ready for the next stage of life.



They form 'Pupae'. This lasts 5-7 days.



An adult Ladybird emerges!



# Ladybird Life Cycle

