

Your topic this half term would have been minibeasts and plants. For your first topic challenge, we would like you to be explorers. What minibeasts can you find either in your garden or on your daily walk? If you can't print this page, you could make a list of the minibeasts to look for or choose a few a day to discover. Think about where you found them? Where do they like to live? What is special about them? Remember to pick them up carefully (if you are allowed), wash your hands after touching and always put them back in their home afterwards. Good luck!



worm



spider



woodlouse



wasp



ladybird



snail



earwig

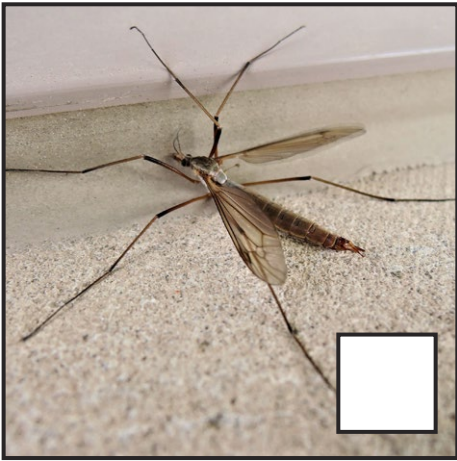


dragonfly



caterpillar





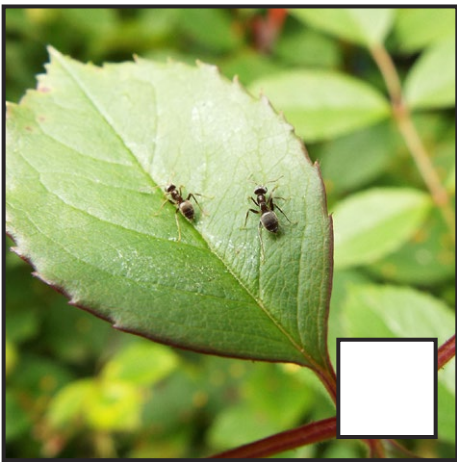
crane fly



beetle



bee



ant



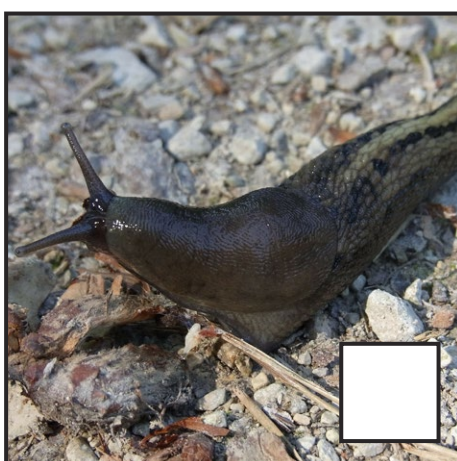
butterfly



fly



millipede



slug



centipede