

Welcome to Onchan Primary School



Foundation Stage Induction
2026/2027

Parents' Booklet

Contents

	Page
Contact Information	3
Induction Programme	4
Starting School	5
Meet the Team	6
Uniform	7
School Day	8
Lunches/Snack	9
What will my child need?	10
Areas of Learning & Development	11
Tapestry	12
How can I help?	13
Our Learning Language	14
General Information	15
Foundation Stage in Action	18



Welcome to Foundation Stage

We are very pleased to welcome your child into full-time schooling here at Onchan School. We understand that starting school is a major event in the life of a four year old with lots of new things to learn. We aim to make it a happy and memorable experience! We hope this booklet will provide some useful information that will help both you and your child get prepared and settled into school life quickly.

Contact Information

Onchan School
School Road
Onchan
Isle of Man
IM3 4PD

Tel: 01624 673465

Email: onchanenquiries@sch.im

Website: onchan.sch.im

Head Teacher: Mrs J Richardson

Deputy Head Teacher: Mr M Kinmond

Foundation Stage Leader: Miss Diack

Induction Programme 2025

Date	Activity
Monday 18th May	New Intake Parents Meeting. 1:15pm in the main school hall.
Friday 3rd July	Transition Day 1 (AM or PM)
Tuesday 7th July	Transition Day 2 (AM or PM)

Taster Sessions

You will receive a letter inviting your child to one morning and one afternoon transition session in school. Should you require any further information, please get in touch with the School Office. Please come to the office on your first transition day and the Foundation Staff will come to take the children down to the class. On the second day, children can come in through the main Reception doors and at the end of the second taster day, your child will come home with a certificate to say what class they will be in. You will then be able to pick your child up at the door for their class.

Nursery Visits

During the final term of this academic year, members of the Foundation Stage team will arrange visits to see the children in their Preschool setting. As well as meeting your child, staff will begin to gather information from their key workers/room leaders. This allows your child to become more familiar with the new adult faces they will see in school. This also allows us to prepare for your child's arrival, incorporate their interests and support a comfortable transition between nursery and school.

Starting School in September

We appreciate that this is a very important step for you and your child and we endeavour to make the transition to full-time school as easy as possible. Children will start on full days in Reception. Experience has shown that this is the least disruptive option for both the children and parents. Our doors open at 8:45am ready for a prompt start to learning.

On the children's first few days in school we will collect them from the playground and we are more than happy that you come into the classroom to see that they are settling. Lots of additional adults in the learning area is overwhelming for many children at this stage and we know that this causes increased anxiety and separation stress for children. If your child is unhappy we will give you a call to let you know how they are after a short time in school.

While the aim of all the transition activities and videos is to try and allay any worries, occasionally, a child may be more upset coming into school over those first few days and this is completely normal – it is best to let us deal with this. If you are concerned or upset yourself, please give the school a call and we would be happy to reassure you.

This year, all children in **Foundation Stage** will begin their journey with us on the same day as **Key Stages 1 and 2 - Thursday 3rd September 2026**.



Meet The Team



Mrs Richardson
Headteacher



Mr Kinmond
Deputy Headteacher



Miss Diack
Foundation Stage Leader
& Class Teacher



Mr Jones
Class Teacher



Miss Kirk
ESO



Miss Dale-Beeton
ESO



Ms Conmy
Admin Team

Uniform

Please see our uniform below (school logos optional).



Royal blue jumpers
and/or cardigans



White Polo Shirt



Black trousers, skirt
and/or pinafore



Blue gingham dress

P.E Kits

Your child needs to bring their full P.E kit into school so they are able to change on designated P.E days.

Indoor PE kit:

Shorts
T-shirt
Pumps

Outdoor PE kit:

Tracksuit bottoms
Hoodie/jacket/long-sleeves
Trainers

Please ensure that all items of clothing/shoes are clearly labelled with your child's name.

No football kits Thank you!

*Shoes should be suitable for outdoor learning - this is a vital part of the children's development.

The School Day

Morning session in Foundation Stage

8:45am – 11:45am

Lunch

11:45am - 1:05pm

Afternoon session in Foundation Stage

1:05pm – 3:20pm

Our doors open at **8:45am**. Children should be on the playground at this time. Early morning activities start once the children come into school at 8.45am. Attendance and school meal registers will be taken at 8:50am. Please be aware that if your child arrives to school after 9:00am they will be marked down as late in our register, which shows on your child's end of year report.

For safety reasons, the children must be collected from the Reception Playground at 3:20pm, by an adult. Please can we ask that you inform the school office in advance if an adult who is NOT a named contact is collecting your child from school. Until the children are in Key Stage 2, we do not allow siblings to collect. If you are unavoidably delayed, please contact the school office so that the Foundation Stage staff are aware.

If you are late arriving, please use the School Office and sign your child in. Ms Conmy will bring your child to the classroom.

Lunches/Snack

School Dinners

There are two lunch options each day that the children can choose from, including a vegetarian option. Further information about school dinners and a copy of the latest menu can be found on our website. We ask that parents sign up to Parent Pay which allows for easy payments online.

Packed Lunch

If you would prefer your child to bring a packed lunch it should be in a securely fastened container and clearly labelled with your child's name. Packed lunches should not include any sweets, chocolate bars, fizzy drinks or products containing nuts due to allergies within the school.

If you wish for your child to change from packed lunches to school dinners or vice versa, the school office should be notified and funds placed on your ParentPay account.

Snack

Children are given a snack each morning and are given the opportunity to accompany the staff to the local shops and help buy the food. This is a fantastic experience for the children and it incorporates many areas of their development. The price for snack is £15 per half term. We would be grateful if the money can be paid at the beginning of each half term and paid in cash, you will receive a written receipt. We would also greatly appreciate it if snack money can be given to a member of the Foundation Stage team in a named and sealed envelope. You are more than welcome to pay the full £90 for the year at the start of term. This is your choice. We would encourage you to send your child into school with a named water bottle.

What will my child need for school?



Book Bag

Your child will need a book bag in school every day. These are stored in the children's trays so we kindly request that you do **not** send your child in with a back pack instead of a book bag. Your child will also be given a book to support phonics learning, a reading record and reading books to be kept in their book bags as the year progresses. As books are kept in the book bag, please do not put water bottles in there.

Wellies

Due to the amount of outdoor learning opportunities we offer, it would be beneficial to send in a pair of clearly named wellies that can be left in school. We always plan for opportunities to get outside.

Coat

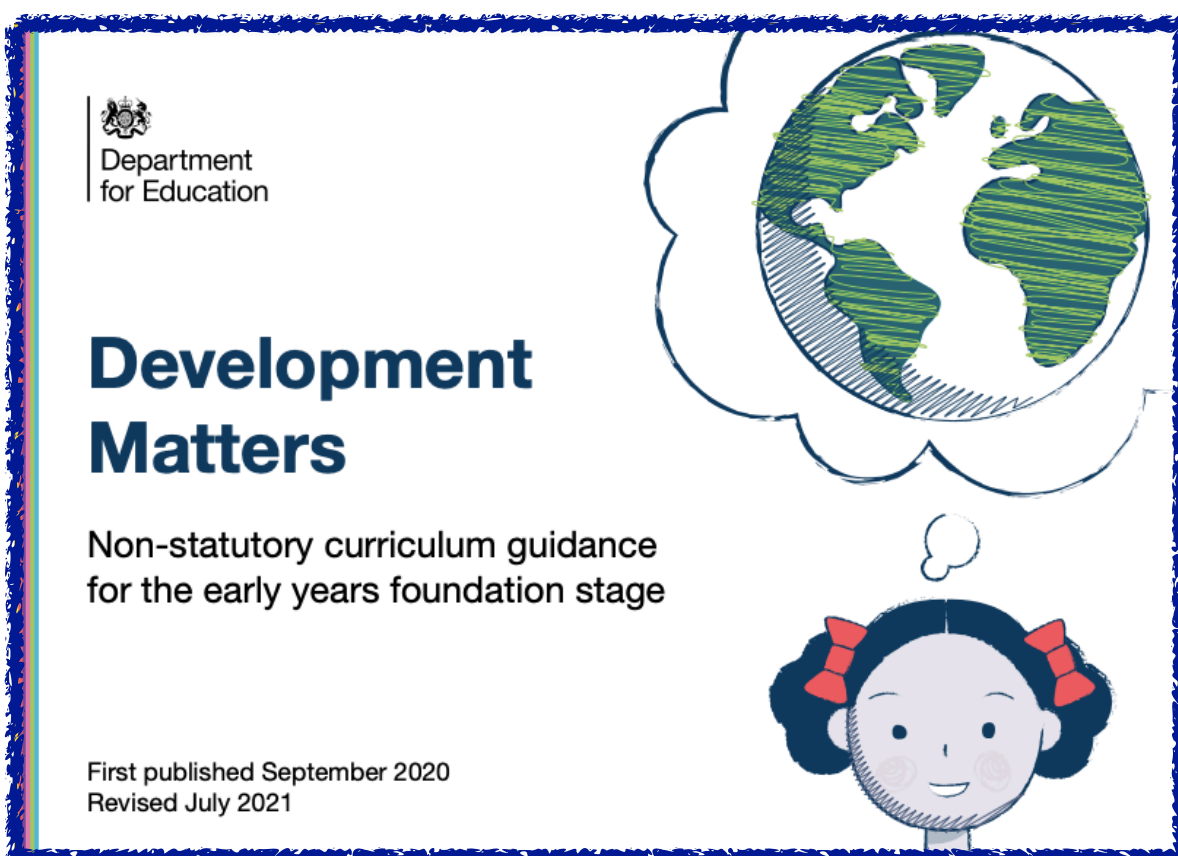
The children will need a clearly named coat in school as we aim to get outside in all weathers! Don't forget that it doesn't need to be a good or expensive coat as it is likely to get muddy, sandy and/or wet! Please note that we do go outside in the rain and we will get wet!

Areas of Learning and Development

The Early Years Foundation Stage (EYFS) forms the building blocks to success for every child. It is a framework for the care, learning and holistic development of each individual child and as such, addresses how children are given the best possible start to their education to ensure they can flourish throughout their time in school.

The prime areas begin to develop quickly in response to relationships and experiences, and run through and support learning in all areas. The prime areas continue to be fundamental throughout the EYFS.

The specific areas include essential skills and knowledge and provide important contexts for learning. We are aware that children progress in these areas at different speeds, depending on their age and stage of development. Staff are mindful of this and take this into account when planning activities and learning experiences. [Click here](#) if you want to find out more about the New Development Matters. (If the link does not work, you can google "New Development Matters")

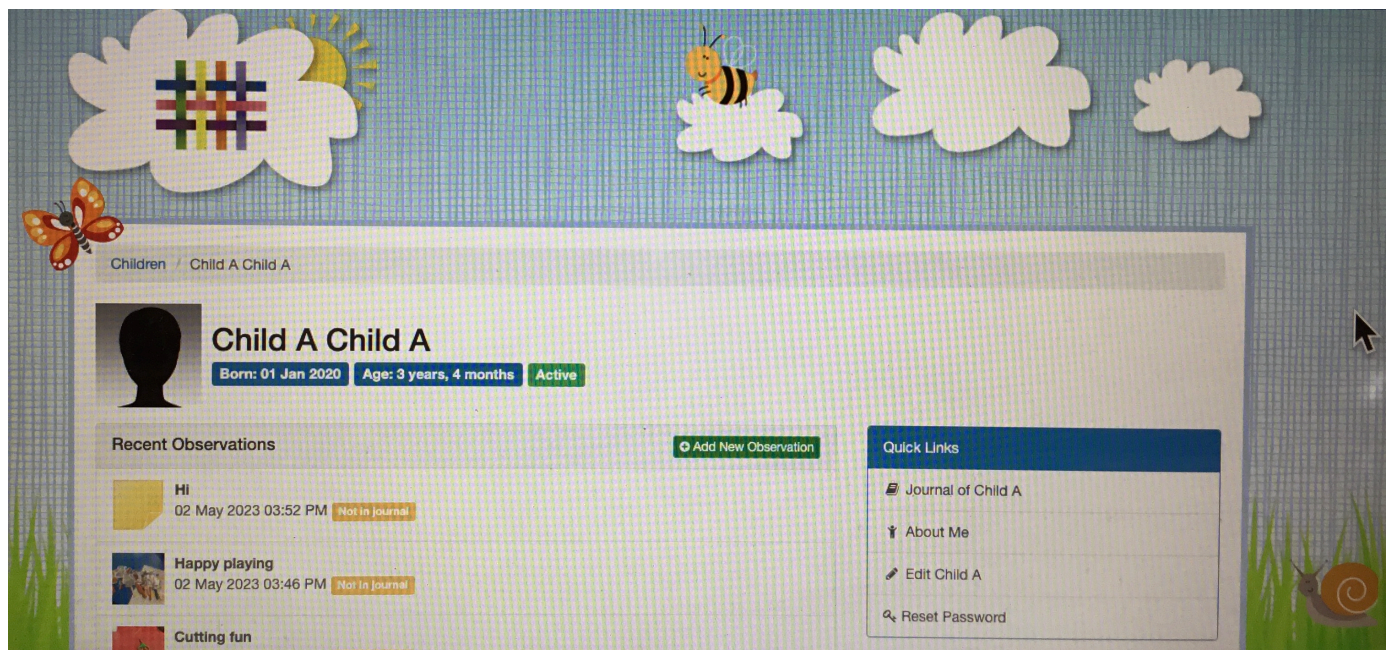


Tapestry

At Onchan School, we use Tapestry to display each child's individual Learning Journey. This is an online Learning Journey that is linked only to you and your child. This is where we will record photos and our observations of the children's learning during child-initiated play. We will use this to celebrate the many "wow moments" that happen in EYFS during the day and to assess the children's level of development across all areas of their learning.

This is a great way for you as parents and carers to have a deeper understanding about what your child has done in school and can spark more meaningful conversations at home when talking to your child about their achievements.

Once your child has started school you will receive an email which will take you to the Tapestry page. You will be able to edit your Child's page with relevant information including their likes and interests which helps to inform our teaching. Again, this page is only seen by yourselves and the staff working in Reception.



How can I help prepare my child for school?

In preparation for school, here are some things you can do with your child to help them develop the basic skills on the road towards their Early Learning Goals (ELGs).



Tips for parents

When your child starts primary school there are a number of skills that they should ideally have mastered. Use this sheet as a guide to help track their progress.

Self-care

- I know when to wash my hands
 - I can wipe my nose
- I can ask for help if I don't feel well

Speaking & literacy

- I am interested in reading stories & looking at picture books
- I am able to talk about myself, my needs & feelings
 - I am practising recognising my name when it's written down

Getting dressed & undressed on my own

- I can button & unbutton my clothes
- I can put my own shoes & socks on
- I can put my coat on & use a zip

Interest in the world & new activities

- I enjoy learning about the world around me
 - I am interested in exploring new activities or environments
 - I like asking questions

Eating

- I can use a knife & fork
- I can open my packed lunch on my own
 - I am confident at opening wrappers & packaging

Writing skills

- I like tracing patterns & colouring in
- I enjoy experimenting with different shaped scribbles
 - I am practising holding a pencil

Going to the toilet

- I can go to the toilet on my own, wipe myself properly & flush
- I can wash & dry my hands without any help

Independence

- I am happy to be away from my mummy, daddy or my main carer
- I am happy to tidy my belongings & look after my things
- I am feeling confident about starting school

Listening & understanding

- I am able to sit still and listen for a short while
 - I can follow instructions
- I understand the need to follow rules

Sharing & turn taking

- I can share toys & take turns
- I can play games with others
- I can interact with other children

Counting skills

- I enjoy practising counting objects
- I like saying number rhymes & playing counting games
 - I can recognise some numbers when they are written down

Routines

- I have practised putting on my uniform & getting ready to leave on time
- I have a good bedtime routine so I'm not feeling tired for school



Onchan School Values

You will hear lots about our different school values: **courage, endeavour, respect, compassion and integrity**. School Values are used in order to promote independence, prepare our children for a lifetime of learning and help our children grow into well rounded individuals. There is a weekly celebration assembly to highlight 2 children from each class that have been displaying these values in their learning. These children are rewarded with special time with the headteacher on Monday for a hot chocolate and toast.

Courage

Children settle into School life and try new activities. They adapt to new situations and changes in their routine e.g. going on a trip



Endeavour

Children display resilience and a 'can do' attitude towards their learning and adapting if they need to.



Respect

Children are kind and welcoming to all members of our school community and also to our school grounds and the wider world



Compassion

Children are aware of others' feelings and offer to help to their peers if they need support.



Integrity

Children are honest and strive to do the right thing in any given situation. They approach each task with the same commitment and motivation to succeed.



General Information

Absences

If your child is ill or has a medical appointment, please notify school as soon as possible by telephone on 01624 673465. If either the school office or your child's class teacher receives no notification, you will receive communication from the school via text message.

Emergency Contact details

It's extremely important that we can contact you during the day. If your child is ill during the school day, they will need to be collected as soon as possible. We do request that should your child suffer a case of vomiting and/or diarrhoea, they are kept off school for 48 hours after the last occurrence to prevent the spread of infection. Please can you keep school informed with any changes to your contact details. We also send out newsletters via email so require at least one email address from you.

Medicines & Health Care Plans

All medication to be administered in school, will need to be accompanied by the relevant forms. These can be obtained from our school office or online. If your child requires an inhaler, please ensure there is one available to be kept in school and one to travel to and from school with your child. Both inhalers should be named and in date. If your child requires an epi-pen, our policy states that there must be 2 epi-pens, which are held in school. These also need to be named and in date. You will be required to fill in a Health Care Plan with your medical practitioner should they require any form of regular/emergency medication in school. It is your responsibility to ensure that your child's medication is in date.

Holidays

Holidays should not need to be taken within school time. However, if this is unavoidable Mrs Richardson will authorise 10 school days only. It is important to remember that this year will enable your child to lay the foundations for all subsequent learning and five days can make a considerable difference in the learning of a young child. Any holiday requests must be put in writing via email to the school office: OnchanEnquiries@sch.im. Holidays will not be granted retrospectively.

Car Parking

Please observe the parking restrictions in force outside all entrances to school and avoid parking on the pavements, grass verges and across resident's drives. **DO NOT PARK** in or walk across the staff car parks when dropping off or collecting your child/children, and we also ask that you do not park in the drop off zone. Parking is available in the Community Centre car park and we advise that you always use the lollipop crossing to encourage safe and good habits for your child.

Head lice

Please check your child's hair regularly for head lice. Children in Foundation Stage are often in close contact through their play and learning, and are therefore more susceptible to the spread of head lice.

Additional Educational Needs (AEN)

At Onchan, we are committed to the equal inclusion of all pupils in all areas of primary school life. We recognise the diverse and individual needs of all our pupils and take into account the additional support required by all children. We aim to provide a secure and accessible environment in which all our children can flourish and all contributions are considered and valued. Inclusion and equality are threads which run through all of the activities in school. We value the opinion of parents and recognise the importance of working together to achieve the best outcomes for the children. Our Inclusion Lead/ Special Educational Needs Co-ordinator (SENCo), is Mrs Gravestock.

Complaints

If you have any issues or complaints your child's teacher should always be approached first. If you do not feel that a satisfactory solution has been found then please contact the school via our school e-mail: OnchanEnquiries@sch.im. (The complaints policy can be found on the website).

Social Media

We do have a school Facebook page which we use to post reminders about school information and events. Whilst we recognise the benefits of social media for keeping in touch, we would always encourage you to have a face to face conversation with the relevant member of staff rather than posting on Facebook. We have a very good relationship with parents and carers that has been developed to very good effect.

Website

We have an active school website (<http://onchan.sch.im>). Please use this as a means of keeping yourselves up to date with school news and events.

Learning the Onchan Way

We are incredibly proud of the values and positive attitudes towards learning we instil in our children. This starts as soon as your child joins us in September. Our learning and teaching policy, along with our learning language, can be accessed on the website.

All Weather School

At Onchan, we are an all weather school, therefore your child will need a waterproof coat and suitable shoes. In Foundation Stage we do have waterproof jackets and trousers that the children can use when playing in our outdoor area. Please be aware that there may be some days the children come home wet!

Illness

If your child is poorly in school, we will phone you. If you are unavailable we will call the other emergency contacts that you have given us that are able to collect your child. If your child is too poorly to come to school, please phone the school office before 9.00.

Trips Out

All year groups have the opportunity to go on school trips throughout the academic year. In recent years, Foundation Stage have enjoyed going to the Community Farm, exploring The Wildlife Park as part of a topic and accompanying staff to Tesco to get the snack for the week. If you would like to join us on a trip throughout the year, please speak to your child's class teacher. We encourage all our volunteers to be DBS checked, more information can be gained from the school office and we are very grateful for any extra help!

Volunteering in School

We are always grateful for help, but want to make sure that the experience is positive for all concerned. It is not always an ideal situation to help in your child's class. Some children find it difficult to maintain their concentration if their parent is in the classroom and some can become distressed when a parent goes home. It is best to liaise with your child's teacher. Teachers usually prefer help on a regular basis so that they can plan for an additional adult either to work with children or carry out other essential tasks. You will need a DBS check to help in school. If you are unable to help on a regular basis you can still help out - we often need help on school trips, and our younger children always enjoy having an adult to help them learn whilst they are playing.

Onchan School Association (OSA)

The OSA organise a variety of successful social and fundraising activities throughout the year. Funds raised are used to purchase resources/equipment for the school, run activities and contribute towards school trips. This benefits all the children in the school and they are always looking for more help so please get involved if you can.

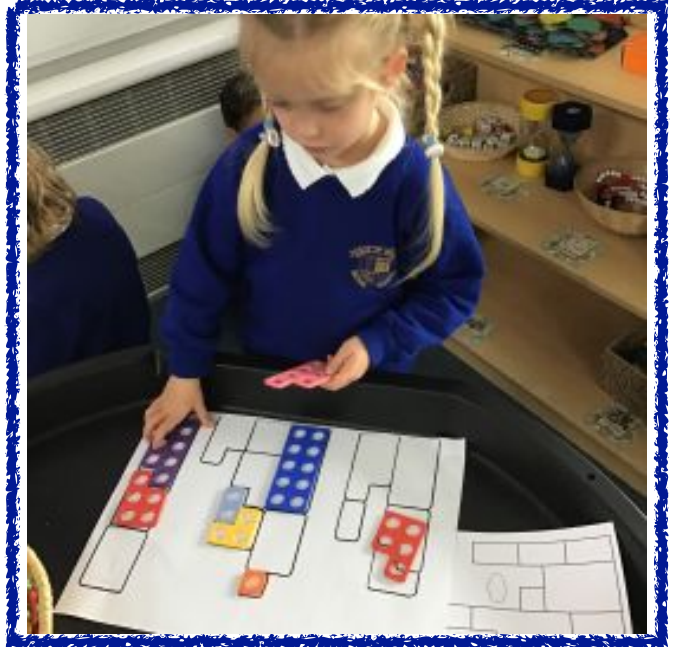


Foundation Stage in Action



We love the **outdoors** in Foundation Stage! We're very fortunate to have our own Outdoor Area in Foundation Stage, which the children always have access to throughout the day. We have our own play bin, stage, mud kitchen and areas to plant and grow. The outdoors offers endless opportunities for creativity and imagination not to mention improved fitness, developed muscle strength and co-ordination!

At Onchan, we follow a **Maths Mastery** approach. Maths Mastery is the process of children gaining a deeper, long-term, secure understanding of the subject. Children are given the opportunity to deepen their understanding of a mathematical concept through a variety of activities including reasoning and problem solving. Maths is also found in their environment all around them so we incorporate maths into what the children are interested in such as the water tray.



Mark-Making is a very important part of the Early Years and we encourage this from September when your child starts with us. Mark-Making is encouraged through writing in sand/glitter, painting, colouring and having a go at writing letters, for example, letters in their name. In order for children to be able to hold a pencil and use it appropriately, they have to have good fine-motor skills. To support them with this, we have adopted an approach called 'Funky Finger Friday's' - have a look at the photos below!





Reading is very important in sparking curiosity, igniting creativity and encouraging imagination! In Foundation Stage, we read lots of stories and promote a love of reading from when the children first start school. We like to provide 'hooks' into books, for example, earlier in the year we investigated the forest area and searched for monster clues. The children found the *Where the Wild Things Are* book and were able to make links and become fully immersed in their learning with real excitement.

Developing children's **fine motor skills** is a big focus in the early years. There are many opportunities for the children to develop their fine motor skills including a play dough area and a large construction area. This area is limited to up to 8 children at a time to allow children to build and communicate in a more calmer environment, improving their creativity and communication skills. This area is also away from the main classrooms and allows the children to leave their constructions out for the afternoon or even the next day to work on in more detail without it being tidied away!



"Inspiring minds to ignite lifelong learning."