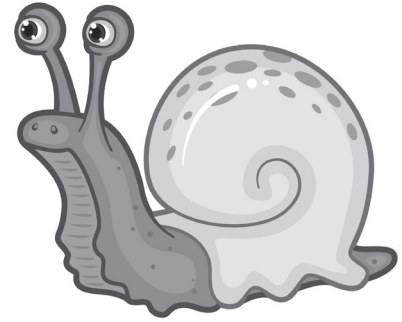


Snails

1 A snail lives in its shell. It carries its shell on its back. A snail has no legs.
It slides along slowly on a slimy foot, leaving a trail of slime behind.

Snails like to hide in dark — damp places. They like
it best when it _____ rained and everything is wet. They
5 come out to eat at night they eat small, new plants, as
these are soft and fresh.

If a snail senses danger, it hides inside its shell.
Its eyes are on the end of stalks, so it can poke one eye out
to see if the danger has passed without showing most of its body.



1 In line 3, write the missing punctuation in the gap.

2 In line 5, add a full stop and a capital letter.

3 In line 5, circle all the nouns.

4 Write a connective (a joining word) from line 8:

5 Write an adverb (word that describes a verb) from line 2:

6 Circle two present tense verbs in line 7.

7 Which is the best word to fill the gap in line 4? Circle the word:

- have
 has
 had
 having

8 Write a synonym (word meaning the same) for the word **slides** in line 2:

9 Which verb in the final paragraph could be replaced by the word **stick**?

<input type="text"/>	1	P
1 mark		
<input type="text"/>	2	P
1 mark		
<input type="text"/>	3	G
1 mark		
<input type="text"/>	4	G
1 mark		
<input type="text"/>	5	G
1 mark		
<input type="text"/>	6	G
2 marks		
<input type="text"/>	7	G
1 mark		
<input type="text"/>	8	V
1 mark		
<input type="text"/>	9	V
1 mark		
<input type="text"/>		/10

Total for this test
Scoresheet C